



**Tarkett Laminate
Installation
instructions
T-Lock**



Product usage

- Tarkett Laminate flooring is not recommended for use in high humidity areas where the floor is usually wet (steam rooms, saunas). For the use in bathrooms, we recommend to use our wet room solution **Aquastyle** (see specific installation instructions)
- This product can be used with **underfloor heating**

Installing laminate floor with underfloor heating

> Explanation and restrictions:

Laminate flooring is suitable for installation on top of underfloor heating systems provided that the heating element is embedded into concrete or any other sub floor. Laminate flooring is not suitable for installation on top of underfloor heating foil installed on top of concrete or any other sub floor unless otherwise specified by the underfloor heating manufacturer. Surface temperature should never exceed 28°C.

> Procedure:

Installing laminate flooring on top of low temperature under-floor heating is possible provided that a specific heating procedure (in accordance to DIN 4725 & regardless of the season) is followed before the damp proofing layer is put in place: set the temperature of your heating device at 25°C & let it run for 3 days. Increase your heating in steps of 5°C up to its max. temperature. Let it run continuously for 72 hours. Decrease the temperature in steps of 10°C until reaching a floor surface temperature of 18°C. Before, during & at least 3 days after the installation of your flooring, the floor surface temperature should be maintained at 18°C.

Do not forget to install the 0.2 mm vapour barrier!

Please check with your dealer & the floor heating system producer.

Recommended tools

- Vacuum cleaner
- T-square
- Tape measure
- Saw - table saw (fine tooth carbide tipped blade)/miter saw/circular saw/jigsaw
- Safety glasses and safety gloves

Recommended installation accessories

- 8 mm spacers (or installation springs)
- Foam underlay
- Skirtings, clipholders for skirtings and profiles for a perfect finish

Please see our brochure or our website www.tarkett.com for the full range of accessories

all you need to install your floor !





Preparation before installation

□ Acclimation

Tarkett Laminate Flooring must be allowed to acclimate to the temperature of the room in which it will be installed.

- Place the unopened cartons of laminate lying horizontally for a minimum of 48 hours before installation in the room in which they will be installed
- Do not remove the plastic wrapping
- Room temperature shall be a minimum of 18°C (65°F)

□ Subfloor preparation

Tarkett Laminate Flooring may be installed over most types of subfloors and existing floors on all grade levels. The subfloor must be structurally sound and free from movement. The subfloor must be clean, dry, level and free of any defects:

- **Dry.** Measure humidity with adequate test instruments. Moisture content of cement screed/concrete must be < 2% CM (CM method) and of anhydrite cement floors (calcium sulphate screed) < 0.5% CM.
- **Level.** The subfloor must be leveled within 3 mm in 1 m -1/4" in 8 ft.- (DIN 18202) or 2 mm over 2 m. Smooth and level all irregularities with a hydraulic (portland) cement base patching and leveling compound.
- **Free of any defect.** Cross check old wood floors, nail/screw to eliminate squeaking. Brush or vacuum clean your floor before beginning installation.

■ Concrete

- Concrete subfloors shall be properly cured and allowed to dry for a minimum of 90 days before installation

■ Wood

- Suspended wood subfloors shall have a minimum of 45 cm (18") of well-ventilated air space clearance above the ground
- A vapour barrier shall not be installed over wooden floor/construction
- Moisture content of wood subfloor shall not exceed 12%

■ Existing Sheet and Tile Flooring

- Existing flooring must be fully adhered and in good condition
- Existing floor must be in a single layer
- Repair any damaged areas

■ Carpeting

- Deep pile carpeting and padding must be removed before laying laminate flooring
- Tarkett® Laminate Flooring may be installed over industrial direct glue carpeting (no padding) that is installed over wood subfloors only
- Carpeting must be removed if installed over concrete
- The use of a foam underlay is not recommended over carpet

IMPORTANT ! A min. 0.2 mm vapour barrier PE foil shall be installed over all sub floors, except on wooden floor/construction. We recommend the use of the Tarkett Soundblock Foam which can reduce impact sound by 18-20 dB. Please check our catalogue or our website www.tarkett.com for more information.

□ Room preparation

- Carefully remove existing wall skirtings and doorway transition profiles. If using quarter round skirtings, wall base skirtings do not have to be removed. Existing quarter round may be reused or replaced with matching quarter round. . The skirting must be of sufficient size to cover a 14 mm (0,55") area around the perimeter of the floor.
- Leave at least 20 mm (0.79") between the surface of the flooring and the bottom of electric baseboard heaters to allow heat to circulate
- Undercut door jambs and door moldings to allow the flooring to fit underneath. Use a scrap piece of flooring and foam underlayer as a guide
- Sweep and/or vacuum subfloor to remove all dirt and debris.



Preparation before installation

□ Before starting

Product check

- Inspect all planks for visible defects and damage before and during installation.
- Do not install damaged or defective planks.
- During installation, inspect the groove area for any debris that may prevent proper assembly of planks

Room check

- Determine in which direction the planks will be installed. To make the room appear larger or if installing in very small rooms or hallways, it is preferable to lay the planks parallel to the longest room dimension. Otherwise lay towards the main source of light
- It is recommended that cabinets be installed before installing planks. However, if planks are installed prior to installing cabinets, the cabinets must be fastened or secured to the supporting wall. Do not fasten cabinets through the laminate flooring.
- Carefully measure the room to determine squareness and also to determine the width of the last row of planks. If the width of the last row of planks is less than 50 mm, excluding the tongue, the width of first row of planks will have to be cut accordingly.



Installation instructions

General installation instructions

- Begin laying planks on the left side of the starting wall and work to the right side. The tongue side of the plank shall face the starting wall.
- Place spacers (minimum 8 mm) between the short and long side of the planks and the wall.
- Press the short end of the next floorboard at an angle to the first one, then lay down. Complete the first row in the same manner. If the starting wall is irregular, scribe or trace the contour of the wall on the first row and cut.

□ General installation instructions (continued)

- The first and last plank in each row must be at least 30 cm in length. The last plank of the row will have to be cut, but if the remaining but if it is less than 30 cm, the first plank in the row will have to be also cut to allow for a longer plank at the end of the row. If the remainder of the last plank is over 30cm, it can serve as the first plank of the next row (if this is done, it will produce an irregular pattern, which can be desired or not). Also make sure that the planks are staggered with minimum 30cm between the short sides from one row to the next.
- Determine the width of the last row of planks by measuring the distance wall to wall allowing the 8 mm expansion gap on both sides. If it is less than 50 mm, excluding the tongue, the width of the first row of planks will have to be cut accordingly.
- When cutting planks, make sure that the teeth of the saw blade are cutting into the decorative surface. Best results are achieved when using a carbide tipped cutting blade.
- If the surface is larger or longer than 10m, use transition profiles to reduce the length of the rows and allow for natural expansion. Use transition profiles in doorways.

□ Installation step-by-step

1. Before installing the first row, the part of the groove profile which sticks out must be cut off
2. First row. Start in a left-hand corner with the groove side against the wall and work towards the right. Press spacers between the floor and the wall to create an expansion gap of 8-10 mm.
3. Second plank, first row. The next board is angled down into the short end of the previous board so that it slides into place.
4. At the end of the row, turn the last board so that it lies tongue to tongue. Push the short end tightly against the wall. Mark where to cut with a pencil 8-10 mm from the previous board's short end to allow for an expansion gap when the board is put into place.



5. Start the second row with the rest of the cut board. Lay the board in place in the groove without pressing it down. Angle the next board into place along the short end. Then push the board until the long side is in place in the groove. The board should slide in the short end joint. Continue in the same way with the next board until the whole row is in place. Ensure that all the short end joints are staggered from the short end joints of the other row by at least 30 cm.



6. When the whole row is in place in the groove, press the whole row down at the same time to give an even and level joint.



7. A tip for efficient and fast installation is to lay out the new row of boards next to the previous row. Fix the short end joints in place with any spare bits of board, then lift the whole row into place and fold it down.



8. Final row: When you get to the final row, it is possible that the boards will not fit width wise. In this case, place a board with the tongue facing the wall, on top of and edge to edge with the last board. Place a spare board on top, and use it as guide for marking the boards of the final row that will be sawn accordingly. Remember to allow for the expansion gap. If the final row of boards does not need to be cut, the tongue must be sawn off in order to allow for the expansion gap.

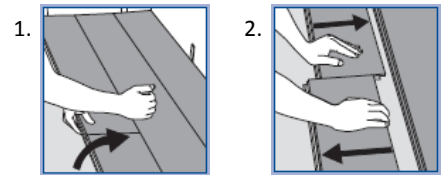


9. If there is no room to fold down the last board, it can be slide in from the side instead. In order to do this, the tongue of the board has to be leveled. Use a chisel to shave off the part of the tongue which raises like a bump along the top of the outside edge. Place a thin bead of Tarkett's D3 adhesive along the top edge of the modified tongue.



□ Specific instructions

- **If you wish or need to remove the flooring,** separate the whole row by carefully lifting up and slightly knocking just above the joint. Fold up and release the whole long side (1). Disassemble the panels by sliding horizontally (Do not fold up) (2)



- **If the long side of the board meets a pipe:** Drill a hole with a diameter min. 16 mm greater than the pipe diameter to give an expansion gap around the pipe. Mark with a pencil where to saw. Saw off the bit which will fit behind the pipes, closest to the wall. Cut at an angle as shown in the picture. If the pipes are located along the short side of the floor, cut the board at a 90° angle straight through the holes. Tap the board in position, glue the loose piece in place, fit a spacer against the wall and cover with pipe collars.



- **Doorframes** can be removed and moved up, but it is usually easier to saw them off. Use a loose floorboard as a height template and saw the frame with a fine-toothed saw. Push the floor under the frame. Ensure that the floor is not wedged between the subfloor and the frame.



Finish

- Remove spacers from perimeter of room. If you used installation springs, you leave them in place.
- Install transition profiles. Do not fasten profiles through the laminate flooring.
- Install quarter round or baseboard skirtings. Skirtings must be of sufficient size to cover the 14 mm gap. Do not fasten skirtings through the laminate flooring, fasten into the wall.
- Use plywood when moving heavy furniture or appliances into position.
- To help protect the floor, place felt pads or other type of protection under the legs of furniture.
- At all times, the recommended room relative humidity (RH) of 45-60% and temperature of 18-24°C should be kept. If necessary install a humidifier/dehumidifier to ensure the best climate for yourself, furniture and your floor.

For further information, please contact your local sales office

Western Europe: **Austria:** Tarkett Holding GmbH, Niederlassung Wien – Tel. +43 1 47 88 062 **Belgium:** Tarkett France Belux – Tel. +32 16 35 98 80 **Denmark:** Tarkett A/S – Tel. +45 43 90 60 11 **Finland:** Tarkett Oy – Tel. +358 9 5406 5870 **France:** Tarkett SAS – Tel. +33 1 41 20 42 49 **Germany:** Tarkett Holding GmbH, Bereich Objekt – Tel. +49 62 33 810 **Greece:** Tarkett Monoprosopi Ltd – Tel. +30 210 6745 340 **Italy:** Tarkett S.p.A. – Tel. +39 0744 7551 **Luxembourg:** Tarkett GDL SA – Tel. +352 949 211 8804 **Netherlands:** Tarkett Holding GmbH, Vestiging Nederland – Tel. +31 76 57 80 760 **Norway:** Tarkett AS – Tel. +47 32 20 92 00 **Portugal:** Tarkett SA – Tel. +351 21 427 64 20 **Spain:** Tarkett Floors S.L – Tel. +34 91 358 00 35 **Sweden:** Tarkett Sverige AB – Tel. +46 771 25 19 00 **Switzerland:** Tarkett Holding GmbH, Bereich Objekt Schweiz – Tel. +41 043 233 79 24 **Turkey:** Tarkett Aspen - Tel. +90 212 213 65 80 **United Kingdom:** Tarkett Ltd – Tel. +44 (0) 1622 854 040 **Baltic Countries:** **Tarkett Baltics:** Tel. +370 37 262 220 **Czech Republic:** Tarkett France SAS, org. slozka - Tel. +420-271 001 602 **Hungary:** Tarkett France SAS - Tel. +36 1 437 8150 **Poland:** Tarkett Polska Sp. z o. o. – Tel. +48 22 639 31 68 **Russian Federation:** ZAO Tarkett RUS - Tel. +7 495 775 3737 **Slovakia:** Tarkett France SAS, org.zlozka - Tel. +421 248 291 317 **South East Europe:** Tarkett Trade d.o.o. – Tel. +381 21 7557 649 (44) 569 12 21 **Ukraine:** Tarkett UA – Tel: +38 (0) 44 569 12 21 **Asia and Oceania:** **Australia:** Tarkett Australia Pty Ltd – Tel. +61 2 88 53 12 00 **China:** Tarkett Floor Covering (Shanghai) Co. Ltd. – Tel. +86 (21) 60 95 68 38 ext 841 **Hong Kong:** Tarkett Asia Pacific Ltd. – Tel. +852 2511 8716 **India:** Tarkett France (India Branch) - Tel. +91 11 4352 4073 **South East Asia:** Tarkett Asia Pacific Ltd – Tel. +65 97 57 36 45 **Africa:** **Tarkett International:** Tel.+33 1 41 20 41 01 **Middle East:** **Tarkett Middle East:** Tel. +961 1 51 3363/4 **Israël:** **Tarkett International:** Tel. +33 1 41 20 41 01 **Latin America:** **Brazil:** Tarkett Fadamac - Tel. 55 12 3954 7108 **Other countries:** Tarkett America Latina – Tel. +55 11 3047 7200 **Argentina - Chile - Uruguay:** Tarkett Latam Mercosur - Tel. 54 11 48 06 74 28 / 54 9 11 44 46 88 82 **Colombia - Panama - Caribbean:** Tarkett Latam Andina - Tel. 57 1 759 5781 / 57 312 273 1566 **Bolivia - Ecuador - Paraguay - Peru:** Tarkett Latam Sur Oeste - Tel. 55 11 3047 7233 **Mexico /Central America:** Tarkett Latam Mexico - Tel. 52 735 35 63 918 / 52 55 51 07 9524